

# **8CH / 16CH DVR Quick Start Guide**



<b>1. Packing.....</b>	<b>P.2</b>
<b>2. Hard Disk Installation.....</b>	<b>P.3</b>
<b>3. DVD-RW Installation.....</b>	<b>P.4</b>
<b>4. Front Panel Controls.....</b>	<b>P.6</b>
<b>5. Rear Panel Connectors.....</b>	<b>P.7</b>

# 1

## PACKING

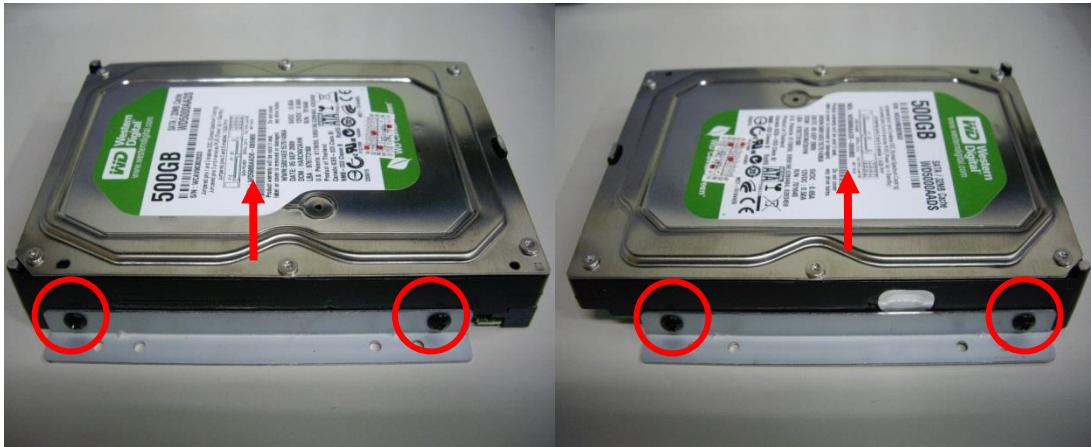
- 1. DVR**
- 2. Quick Start**
- 3. Battery**
- 4. CD**
- 5. Hard Disk Mount**
- 6. Screws**
- 7. Power Cord**
- 8. SATA Cord**

Note: Standard shipping products do not include HDD

# 2

## HARD DISK INSTALATION

Step 1) Fix the HDD to rack mount with the screws as indicated.



Step 2) Place the HDD on the HDD plate and screw it as indicated.



Step 3) Connect the power and the SATA cables as indicated.



Note: After installation, please initialize Hard Disk before starting to record.

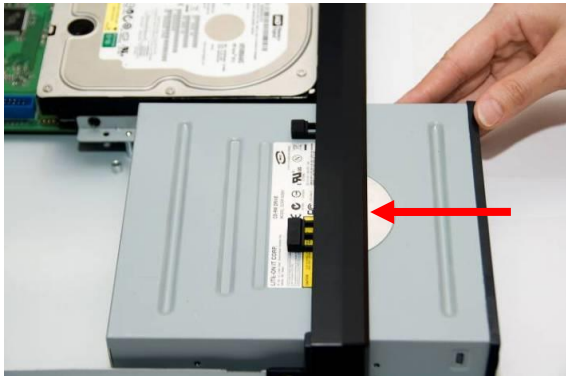
### *DVD-RW Installation*

*(Standard shipping products do not include HDD and DVD-RW)*

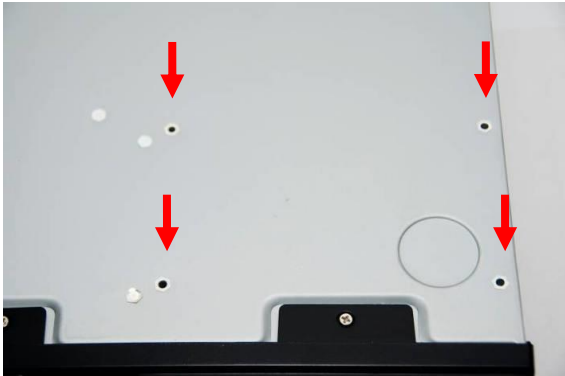
**Step 1: Remove the front cover from DVR.**



**Step 2: Put the DVD-RW into the unit as indicated.**



**Step 3:Put DVR bottom up, screw to fix the DVD-RW as indicated.**

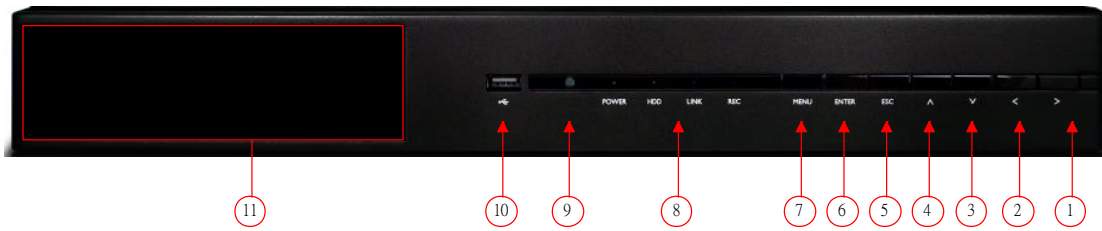


**Step 4:Connect the power and the flat cables as indicated.**



# 4

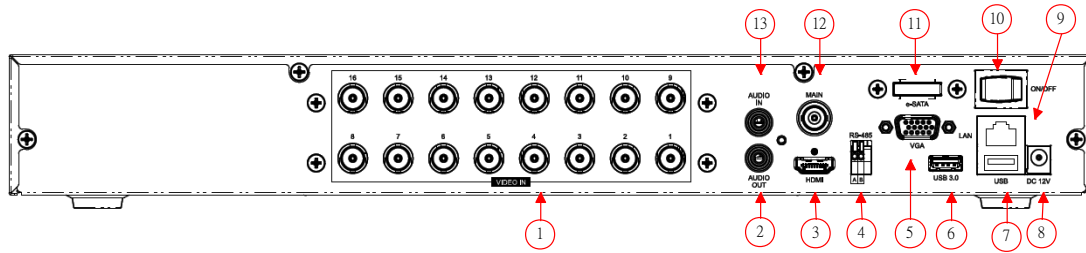
## FRONT PANEL CONTROLS



Control Keys	Description
1. Arrow Keys	▶ : In SETUP mode, press to increase value. In PLAYBACK mode press to play forwards.
2. Arrow Keys	◀ : In SETUP mode, press to reduce value. In PLAYBACK mode, press to play rewind.
3. Arrow Keys	▼ : In SETUP mode, press to move cursor down. In PLAYBACK mode, press to stop playing back.
4. Arrow Keys	▲ : In SETUP mode, press to move cursor up. In PLAYBACK mode, press to slow down.
5. ESC	In LIVE mode, press to backup menu. In sub menu, press to leave menu.
6. ENTER	In SETUP mode, press to enter sub menu. In Live mode, switch to full screen display.
7. MENU	In LIVE mode, press to display menu. In PLAYBACK mode, press to pause playback.
8. LED Display	<b>POWER:</b> Power is on. <b>HDD:</b> Hard disk is in use. <b>LINK:</b> Connected to the internet ( <i>in red:</i> Remote user logged in). <b>REC:</b> Recording.
9. IR Sensor	Input sensor for the remote control.
10. USB 2.0	Port for USB external devices
11. DVD Writer	Optional DVD-RW backup device.

# 5

## REAR PANEL CONNECTORS



1. Video Input	Video input port, 8 or 16 in total.
2. AUDIO OUT	RCA output port for audio signal.
3. HDMI	HDMI Port
4. RS-485	RS-485
5. VGA	VGA Port
6. USB 3.0	USB 3.0 Port
7. USB	USB 2.0 Port
8. DC-in	DC 12V input
9. LAN	Network Port
10. ON/OFF	Power Switch
11. *(eSATA)	Option for eSATA
12. MAIN	BNC Output
13. AUDIO IN	RCA input port for audio signal.

\*default without esata.